

## M108-450-TRM3Q SERIES LOW LOSS UHF COMBINER

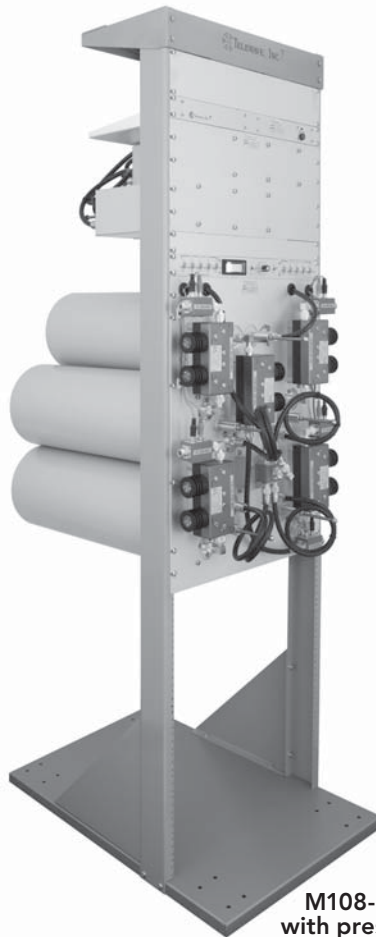
The M108-450-TRM3Q series uses up to ten 8-inch, high “Q” ¾-wave low-loss cavities mounted on a standard EIA 19” x 72” rack. These combiners are available in a vertical or horizontal configuration, depending on customer requirements.

Up to 8 cavities can be mounted vertically in two groups, or up to 10 cavities can be mounted horizontally on two 5-channel panels. The vertical configuration is useful for installation in limited space or direct wall mounting. Each cavity also contains internal support for the tuner assembly specifically to enable horizontal mounting.

Optional power monitoring for each channel is available, as well as remote keying for each transmitter. The PM10C2S-1C wattmeter panel uses only 1.75” of rack space.

An optional receiver system can be built around the Telewave compact preselector series, or full-size cavities as needed. Depending on the application, the TPCP-4544 or TPCP-4546 preselector may be mounted in the upper portion of a 72” or 84” rack, and a 1RU receiver panel with 8 or 16 channels.

As new narrowband channel assignments become more common, channel spacing is even more critical. The M108-450-TRM series allows operators of high-density UHF systems to take advantage of new technology, while preserving and enhancing the performance of existing equipment.



M108-450-5TRM3Q  
with preselector, power  
monitoring, and RX panel



M108-450-8TRM3Q  
vertical mounting

### SPECIFICATIONS

Frequency ranges	400-512 MHz
Channels	1-10 channels into 1 or 2 antennas
Channel separation (min)	175 KHz
Input power (max)	150 watts per channel
Impedance / Input VSWR (typ.)	50 ohms / 1.25:1
Insertion loss per ch. (typ.)	3.6 dB - 5 ch. at 200 KHz spacing
TX-to-TX isolation (typ.)	80 dB
Antenna to TX isolation (typ.)	75 dB
2nd harmonic suppression (typ.)	90 dB
Cavity size	8” diameter / ¾ wave
Operating temperature	-30°C to +60°C
Mounting / Connectors	19” rack mount / N Female
Panel dimensions (HWD) in. (cm)	24.5 x 19 x 26 (62 x 48.3 x 66)
Weight lb. (kg)	150 (68.1) 5 ch.