

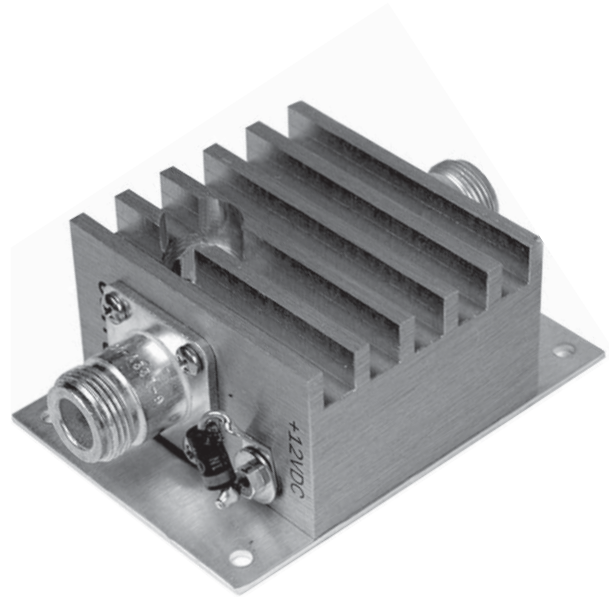
TLA- SERIES

LOW NOISE BIPOLAR INLINE PREAMPLIFIERS

- FEATURES**
- 50 OHM INPUT/OUTPUT
 - OVER-VOLTAGE/POLARITY PROTECTION
 - VERSATILE MOUNTING OPTIONS
 - HIGH THIRD ORDER INTERCEPT
 - RESISTANT TO INPUT OVERLOAD

Telewave TLA Series in-line preamplifiers use surface-mount bipolar devices to amplify low level RF signals by up to +34 dB. The primary application of these preamplifiers is to improve the noise figure of a receiver system. Preamps compensate for splitter insertion loss or losses from long coax cable runs, and increase signal levels to spectrum analyzers or other test equipment.

Each preamplifier is housed in a rugged, custom made, RF-tight aluminum enclosure. The DC input is reverse polarity protected, and equipped with a high-pass filter to eliminate RFI. Preamplifiers are tuned to customer specified center frequencies.



MODEL	FREQUENCY	BANDWIDTH
TLA50-12	30-88 MHz	60 MHz
TLA150-12	132-174 MHz	50 MHz
TLA220-12*	216-250 MHz	50 MHz
TLA330-12	320-390 MHz	70 MHz
TLA450-12	400-512 MHz	112 MHz
TLA760-12	763-824 MHz	50 MHz
TLA860-12	806-960 MHz	50 MHz

NOTE: These preamplifiers are for receiver use only. They are not designed to accept transmitter power levels.

COMMON SPECIFICATIONS	
Impedance / VSWR (typ.)	50 ohms / 1.25:1
Noise figure (typ)	2.5 dB
Gain (factory adjusted)	30-88 MHz: +8 to +34 dB 132-512 MHz: +6 to +28 dB 760-960 MHz: +6 to +21 dB
1 dB compression	+25 dBm typ
3rd order intercept	+35 dBm typ
Power requirements	+12 to +24 VDC, 170 mA
Transient protection	20 kV / 1 μs
Temperature range	0°C to +40°C
Enclosure	Gold or clear alodine
Hardware	Stainless steel
Connectors	N-F (SMA, BNC opt.)
Dimensions (HWD) in. (cm)	1.3 x 2.25 x 2.0 (3.3 x 5.7 x 5.1)
Footprint in. (cm)	3.25 x 2.25 (8.3 x 5.7)
Net weight oz (g)	3.8 (108)
Shipping weight lb. (kg)	1 (0.45)