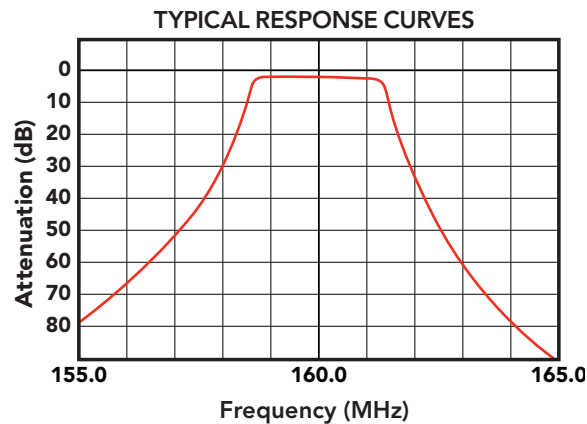
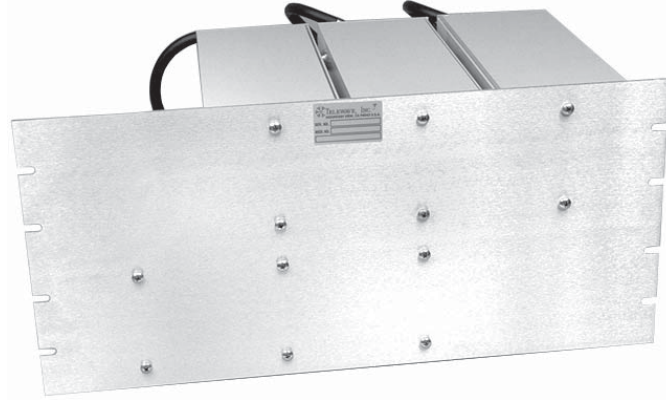


## TPCP-1546C COMPACT VHF PRESELECTOR

The TPCP-1546C offers high performance in a compact design for the 148-174 MHz VHF band.

Six square, pass-reject cavities provide greater than 80 dB attenuation at +/- 5 MHz, with a bandpass of 2.2 MHz or less, and insertion loss of 2.5 dB or less.

The custom-extruded 4-inch cavities allow horizontal rack mounting on a standard 19" rack, with rack height of only 8.75".



<b>ELECTRICAL SPECIFICATIONS</b>	
Tuning range	148-174 MHz
Pass bandwidth (max)	2.2 MHz
Insertion loss (typ)	2.5 dB
Attenuation at +/- 5 MHz (min)	80 dB
Impedance (nom) / VSWR (max)	50 ohms / 1.5:1
Input power (max)	350 watts
Temperature range	-30°C to +70°C
Number of cavities	6
<b>MECHANICAL SPECIFICATIONS</b>	
Mounting	19" Rack mount
Dimensions (HWD) in. (cm) (tuning rods fully extended)	8.75 x 19 x 15 (22.2 x 48.3 x 38.1)
Connectors	N Female, UHF (opt.)
Finish	Alodine / Gray acrylic enamel
Net weight lb. (kg)	36.5 (16.6)