

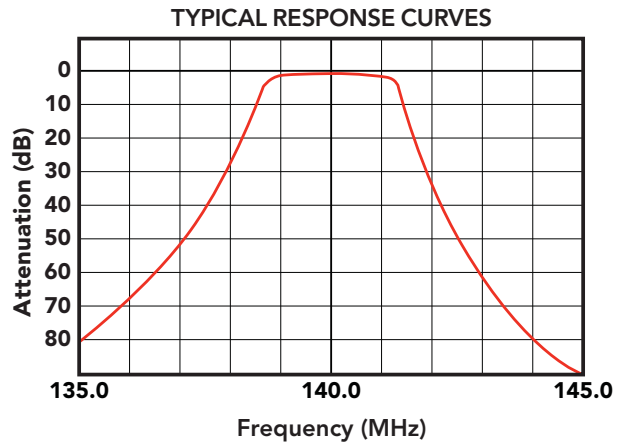
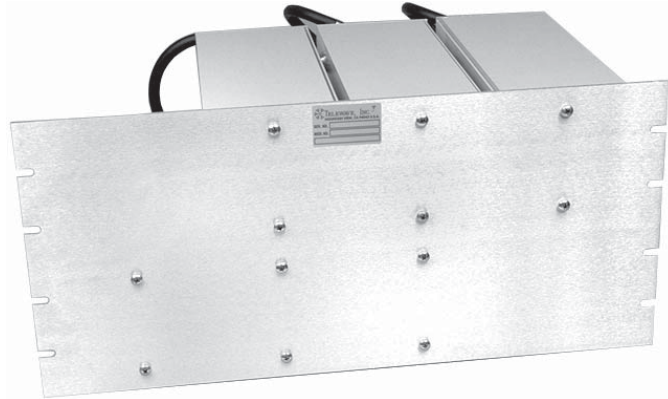
TPCP-1446C

COMPACT VHF PRESELECTOR

The TPCP-1446C offers high performance in a compact design for the 135-151 MHz VHF band.

Six square, pass-reject cavities provide greater than 80 dB attenuation at +/- 5 MHz, with a bandpass of 2.2 MHz or less, and insertion loss of 2.5 dB or less.

The custom-extruded 4" cavities allow horizontal rack mounting on a standard 19" rack, with rack height of only 8.75".



ELECTRICAL SPECIFICATIONS	
Tuning range	135-151 MHz
Pass bandwidth (max)	2.2 MHz
Insertion loss (typ)	2.5 dB
Attenuation at +/- 5 MHz (min)	80 dB
Impedance (nom) / VSWR (max)	50 ohms / 1.5:1
Input power (max)	350 watts
Temperature range	-30°C to +70°C
Number of cavities	6
MECHANICAL SPECIFICATIONS	
Mounting	19" Rack mount
Dimensions (HWD) (tuning rods fully extended)	8.75" x 19" x 18"
Connectors	N Female, UHF (opt.)
Finish	Alodine / Gray acrylic enamel
Net weight	36.5 lb.