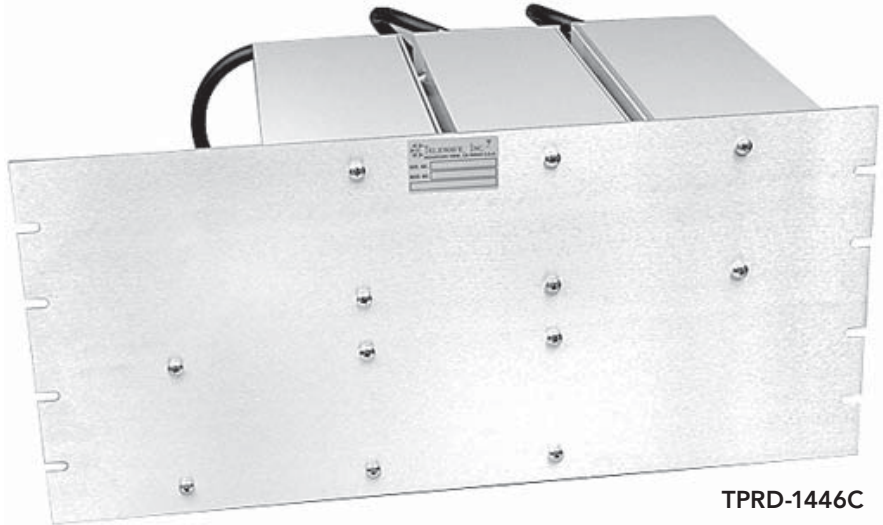


TPRD-1446C

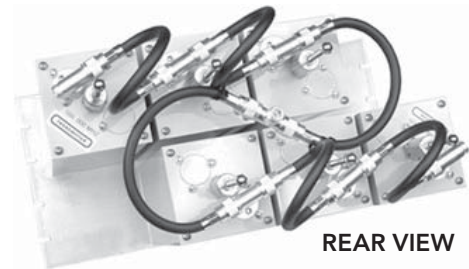
COMPACT PASS / REJECT DUPLEXER

The TPRD-1446C offers high performance in a compact design for the 135-151 MHz VHF band. These duplexers are only one-third of the size of earlier models, and deliver equivalent performance.

Custom-extruded 4" cavities allow horizontal rack mounting. Three pass-reject sections for the transmit and receive paths provide 80 dB isolation at 500 KHz, with a 350 watt power rating, and insertion loss of 2.5 dB or less. The duplexer fits a standard 19" rack, with rack height of 8.75".



TPRD-1446C



REAR VIEW

ELECTRICAL SPECIFICATIONS	
Tuning range	135-151 MHz
Frequency separation (min)	500 KHz
Maximum input power	350 watts
Insertion loss TX / RX to ant.	2.5 dB
TX noise suppression at RX (typ)	80 dB at 500 KHz
RX isolation at TX (typ)	80 dB at 500 KHz
VSWR (max)	1.5:1
Temperature range	-30°C to +70°C
Number of cavities	(6) - 4"
MECHANICAL SPECIFICATIONS	
Mounting	19" Rack
Dimensions (HWD) in. (cm)	8.75 x 19 x 16 (Tuners fully extended) 22 x 48 x 40.6
Connectors	N or UHF Female
Finish	Gray acrylic enamel
Net weight lb. (kg)	37 (16.8)

