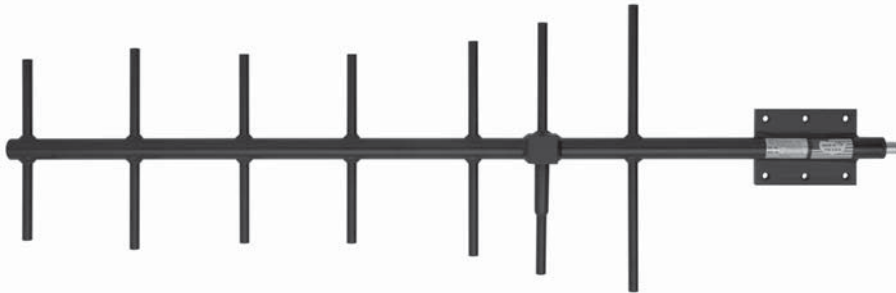


## ANT410Y10-WR YAGI ANTENNA 10 dBd



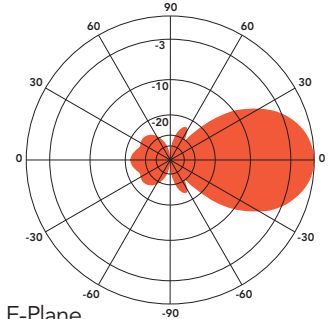
The Telewave ANT410Y10-WR is a high performance directional antenna, designed especially for point to point as well as point to multipoint applications. This antenna produces 10 dBd forward gain with an excellent front-to-back ratio. Solid aluminum elements with 360° welds prevent intermodulation and provide exceptional strength.

Each antenna is completely protected with our high-tech Txylan™ coating, which provides icing resistance and environmental protection from corrosive gases, ultraviolet radiation, salt spray, acid rain and wind blown abrasives

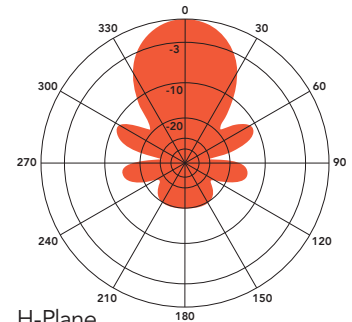
such as desert sand. The feed line is protected within the boom, and the radiating element is completely sealed against ice and other hazards with a tough, RF-transparent radome.

The ANT410Y10-WR includes a welded vertical plate and mast clamp set. A horizontal plate is optional. The clamp set secures the antenna to a vertical mast or tower support from 1.5" - 3.5" O.D. For installations on angled supports, the "U" mount allows mounting to virtually all angled supports up to 3.5" O.D.

ANT410Y10-WR at 410 MHz

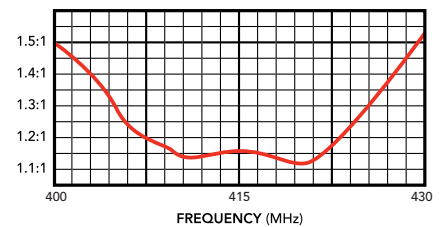


E-Plane  
Gain: 10.1 dBd



H-Plane  
Gain: 10.1 dBd

TYPICAL VSWR RESPONSE



| SPECIFICATIONS            |                            |                                  |                       |
|---------------------------|----------------------------|----------------------------------|-----------------------|
| Frequency (continuous)    | 405-420 MHz                | Elements                         | 7                     |
| Gain (typ)                | 10 dBd                     | Dimensions (L x H)               | 45 x 17 in.           |
| Power rating (typ)        | 500 watts                  | Antenna weight                   | 8 lb.                 |
| Impedance / VSWR          | 50 ohms / 1.5:1 (max)      | Shipping weight                  | 11 lb.                |
| Front to back ratio (min) | 20 dB                      | Wind rating / with 0.5" ice      | 150 / 125 MPH         |
| Beamwidth V / H           | 49° / 47°                  | Exposed area (flat plate equiv.) | 0.42 ft. <sup>2</sup> |
| Pattern / Polarization    | Directional / Vertical     | Lateral thrust at 100 MPH        | 17 lb.                |
| Termination               | N Female or 7-16 DIN (opt) | (40 psf - flat plate equiv.)     |                       |