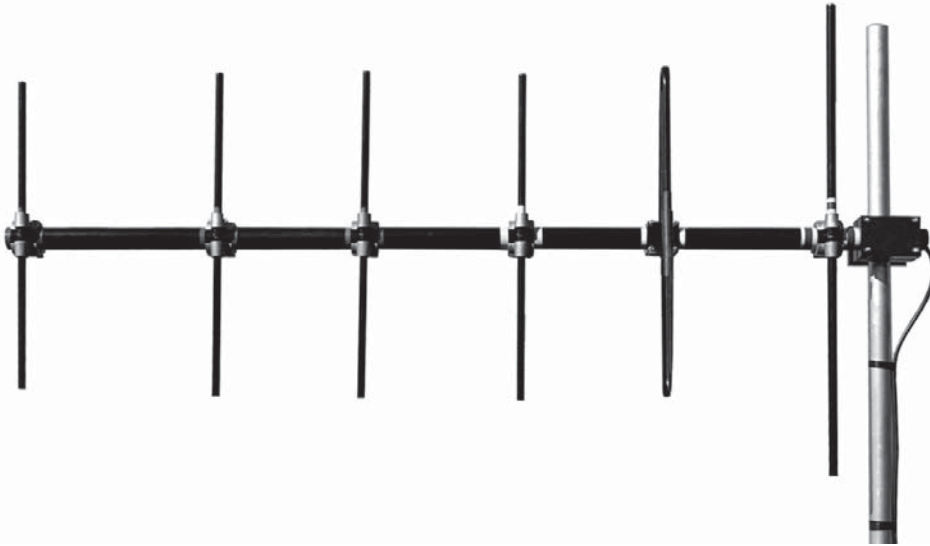


ANT150Y10H

YAGI ANTENNA 10 dBd

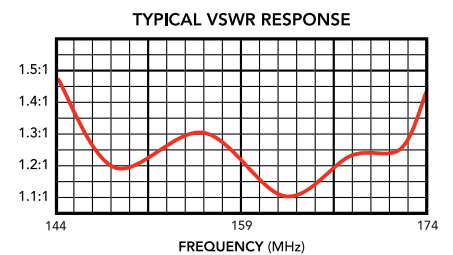
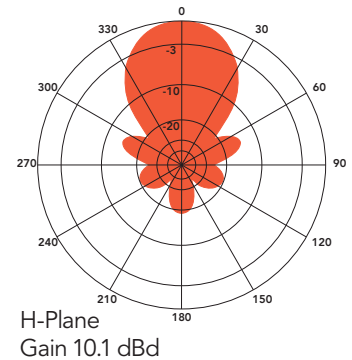
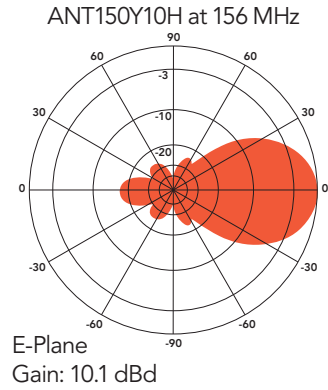


The Telewave ANT150Y10H is a very rugged, high performance directional antenna, designed especially for point to point or multipoint applications. Six elements provide a minimum of 10 dBd gain, high front-to-back ratio, and wide band capability. The elements are constructed from solid aluminum to prevent intermodulation and provide exceptional strength.

All antenna components are completely protected with our high-tech Txylan™ coating, which seals the antenna against corrosive gases, ultraviolet radiation, salt

spray, acid rain, and windblown sand in desert environments. The coating also reduces ice buildup. The active element connection is sealed within the element itself, eliminating a major failure point. All antenna components are at DC ground for lightning protection.

The ANT150Y10H includes a heavy duty clamp set, which allows the antenna boom to be rotated for polarization adjustment. (Factory must be consulted if horizontal operation is planned.) This clamp set secures the antenna to a vertical or horizontal mast or tower support from 1.5" - 3.5" O.D.



SPECIFICATIONS			
Frequency (continuous)	144-174 MHz	Elements	6
Gain (typ)	10 dBd	Dimensions (L x H)	96 x 40 in.
Power rating (typ)	500 watts	Antenna weight	33 lb.
Impedance / VSWR	50 ohms / 1.5:1 (max)	Shipping weight	37 lb.
Front to back ratio (min)	17 dB	Wind rating / with 0.5" ice	150 / 100 MPH
Beamwidth V / H	44° / 47°	Exposed area (flat plate equiv.)	1.7 ft. ²
Pattern / Polarization	Directional / Vertical (Horizontal opt. if specified)	Lateral thrust at 100 MPH (40 psf - flat plate equiv.)	67 lb.
Termination	N Female or 7-16 DIN (opt)	Bending moment at mast clamp	222 ft. lb.