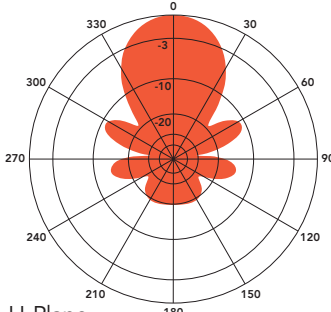
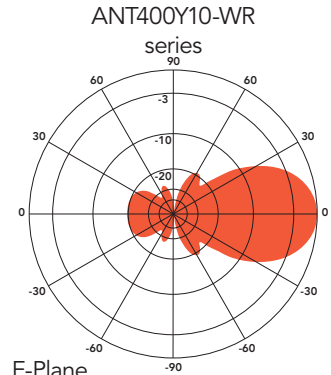
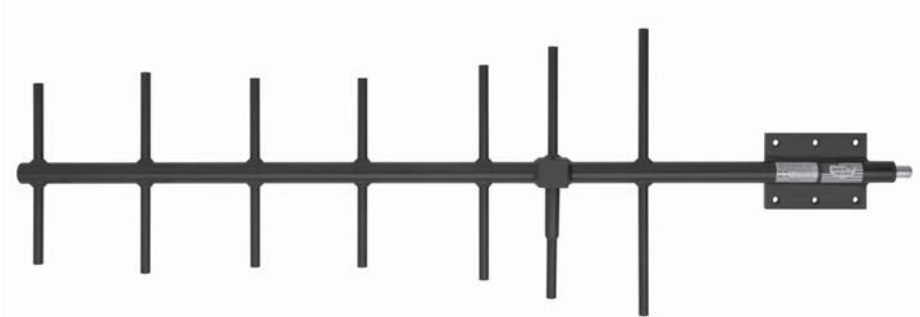


ANT400Y10-WR SERIES

YAGI ANTENNA 10 dBd



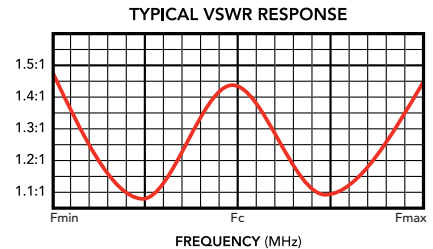
The Telewave ANT400Y10-WR series consists of seven high performance directional antennas, designed especially for point to point as well as point to multipoint applications. These antennas produce 10 dBd forward gain with an excellent front-to-back ratio. Solid aluminum elements with 360° welds prevent intermodulation and provide exceptional strength.

Each antenna is completely protected with our high-tech Txylan™ coating, which provides icing resistance and environmental protection from corrosive gases, ultraviolet radiation, salt spray, acid rain and wind blown abrasives such as desert sand. The feed line is protected within the boom, and the radiating element is completely sealed against ice and

other environmental hazards with a tough, RF-transparent radome.

ANT400Y10-WR series antennas include a welded vertical plate and mast clamp set. A horizontal plate is optional. The clamp set secures the antenna to a vertical mast or tower support from 1.5" - 3.5" O.D. For installations on angled supports, the "U" mount allows mounting to virtually all angled supports up to 3.5" O.D.

FREQUENCY RANGES	
ANT410Y10-WR	405-420 MHz
ANT420Y10-WR	415-450 MHz
ANT430Y10-WR	420-440 MHz
ANT440Y10-WR	438-455 MHz
ANT450Y10-WR	450-470 MHz
ANT490Y10-WR	470-500 MHz
ANT500Y10-WR	485-512 MHz



SPECIFICATIONS			
Frequency range	405-512 MHz	Elements	7
Gain (typ)	10 dBd	Dimensions (typical) (L x H)	44 x 14.5 in.
Power rating (typ)	500 watts	Antenna weight	8 lb.
Impedance / VSWR	50 ohms / 1.5:1 (max)	Shipping weight	11 lb.
Front to back ratio (min)	20 dB	Wind rating / with 0.5" ice	150 / 125 MPH
Beamwidth V / H	49° / 47°	Exposed area (flat plate equiv.)	0.42 ft. ²
Pattern / Polarization	Directional / Vertical	Lateral thrust at 100 MPH	17 lb.
Termination	N Female or 7-16 DIN (opt)	(40 psf - flat plate equiv.)	