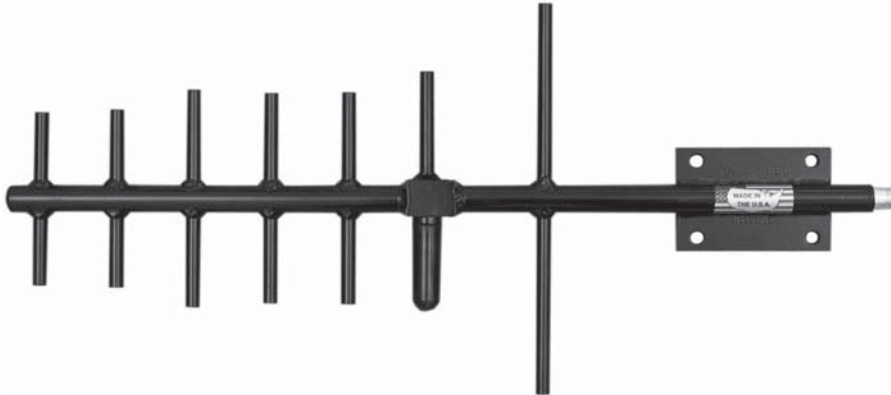


## ANT940Y10-WR YAGI ANTENNA 10 dBd



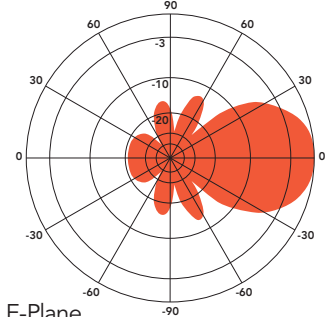
The Telewave ANT940Y10-WR is a high performance directional antenna, designed especially for point to point as well as point to multipoint applications. This antenna produces 10 dBd forward gain with an excellent front-to-back ratio. Solid aluminum elements with 360° welds prevent intermodulation and provide exceptional strength.

Each antenna is completely protected with our high-tech Txylan™ coating, which provides icing resistance and environmental protection from corrosive gases, ultraviolet radiation, salt spray, acid rain and wind blown abrasives

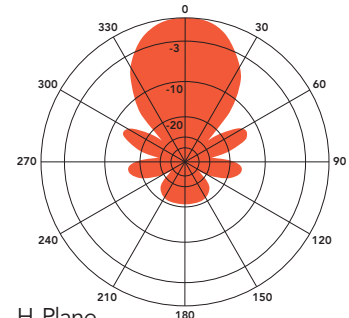
such as desert sand. The feed line is protected within the boom, and the radiating element connection is completely sealed against ice and other environmental hazards with a tough, RF-transparent radome.

The ANT940Y10-WR includes a welded vertical plate and mast clamp set. A horizontal plate is optional. The clamp set secures the antenna to a vertical mast or tower support from 1.0" - 2.5" O.D. For installations on angled supports, the "U" mount allows mounting to virtually all angled supports up to 3.5" O.D.

ANT940Y10-WR at 935 MHz

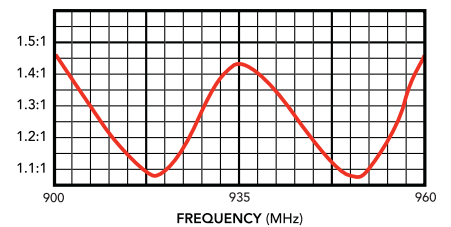


E-Plane  
Gain: 10.2 dBd



H-Plane  
Gain: 10.2 dBd

TYPICAL VSWR RESPONSE



SPECIFICATIONS			
Frequency (continuous)	900-960 MHz	Elements	7
Gain (typ)	10 dBd	Dimensions (L x H)	24 x 11 in.
Power rating (typ)	500 watts	Antenna weight	3 lb.
Impedance / VSWR	50 ohms / 1.5:1 (max)	Shipping weight	7 lb.
Front to back ratio (min)	20 dB	Wind rating / with 0.5" ice	200 / 165 MPH
Beamwidth V / H	49° / 47°	Exposed area (flat plate equiv.)	0.25 ft. <sup>2</sup>
Pattern / Polarization	Directional / Vertical	Lateral thrust at 100 MPH	7.25 lb.
Termination	N Female or 7-16 DIN (opt)	(40 psf - flat plate equiv.)	