

ANT75D DIPOLE ANTENNA

The Telewave ANT75D is a rugged, high-performance single dipole antenna designed for VHF midband services, including utilities, paging links, control stations, and military communication. This antenna provides 22 MHz bandwidth with no tuning required. The horizontal pattern is adjustable, and multiple elements can be stacked for increased gain and pattern control.

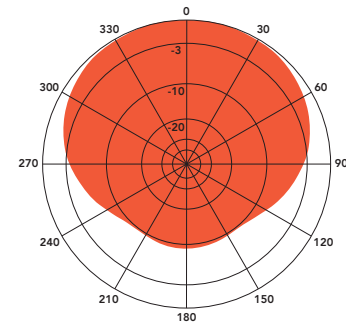
Each antenna is constructed with 6061-T6 aluminum, and is welded at the base for maximum strength.

Each antenna is also completely sealed with our high-tech Txylan™ coating, which resists water and ice buildup, and provides exceptional protection from corrosive gases, UV radiation, salt spray, acid rain and windblown abrasives.

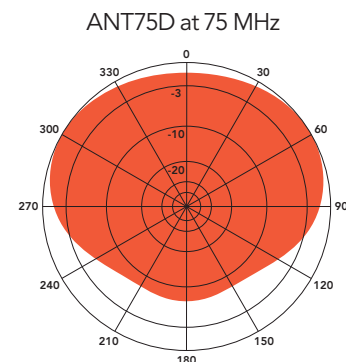
All components are at DC ground potential for lightning protection. A full clamp set is included for mounting to a 1.5"-3.5" diameter galvanized steel support pipe or tower leg.



SPECIFICATIONS	
Frequency (continuous)	66-88 MHz
Power rating (typ.)	500 watts
Impedance	50 ohms
VSWR	1.5:1 or less
Pattern	Adjustable: Offset circular, cardioid, or bidirectional
Lightning protection	DC Ground
Termination	N-Male or 7-16 DIN (opt.) on harness feed cable
Gain (dependent on pattern)	1-2.5 dBd
Vertical beamwidth	78°
Horizontal beamwidth	Dependent on pattern
Dipole dimensions (H x W)	68 x 7 in.
Boom dimensions (L x Dia.)	65 x 1.25 in.
Weight (antenna + clamps)	21 lb.
Wind rating / 0.5" ice	125 / 100 MPH
Maximum exposed area	2.3 ft. ²
Lateral thrust at 100 MPH	92 lb



H-Plane gain 2.6 dBd
1/4 wl. spacing from tower



ANT75D at 75 MHz
H-Plane gain 0.7 dBd
3/8 wl. spacing from tower