

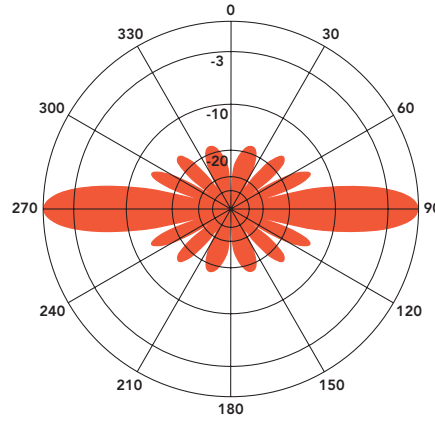
# ANT440F6

## FIBERGLASS COLLINEAR ANTENNA 6 dBd

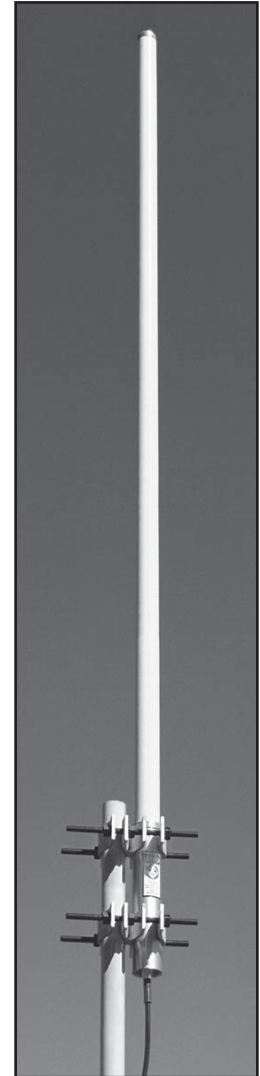
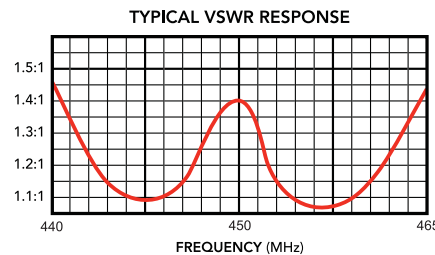
The Telewave ANT440F6 is an extremely rugged, medium-gain, fiberglass collinear antenna, designed for operation in all environmental conditions. The antenna is constructed with brass and copper elements, connected at DC ground potential for lightning impulse protection.

All junctions are fully soldered to prevent RF intermodulation, and each antenna is completely protected within a high-tech ruggedized radome to ensure survivability in the worst environments. The "Cool Blue" radome provides maximum protection from corrosive gases, ultraviolet radiation, icing, salt spray, acid rain, and wind blown abrasives.

The ANT440F6 includes an ANTC482 dual clamp set for mounting to a 1.5" to 4" diameter support pipe, and a 24" removable RG-213 N-Male jumper. Stand off and top mounts are also available.



ANT440F6 - 450 MHz  
Vertical Plane  
Gain = 6.28 dBd



### SPECIFICATIONS

Frequency (continuous)	440-465 MHz	Dimensions (L x base diam.) in.	94 x 2.375
Gain	6 dBd	Tower weight (antenna + clamps)	21 lb.
Power rating (typ.)	500 watts	Shipping weight	26 lb.
Impedance	50 ohms	Wind rating / with 0.5" ice	150 / 125 MPH
VSWR	1.5:1 or less	Maximum exposed area	1.5 ft. <sup>2</sup>
Pattern	Omnidirectional	Lateral thrust at 100 MPH	60 lb.
Vertical beamwidth	18°	Bending moment at top clamp	143 ft. lb.
Termination	Recessed N-Female 7-16 DIN-F opt.	(100 MPH, 40 PSF flat plate equiv.)	

