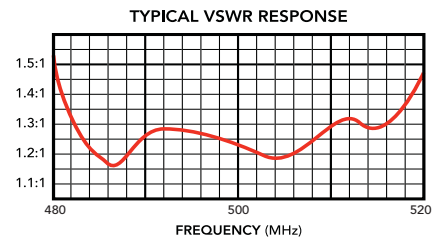
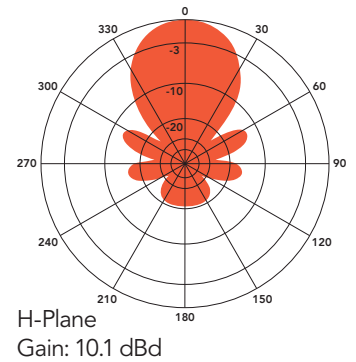
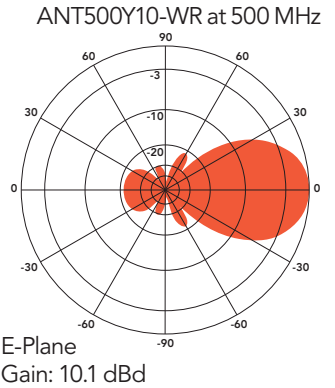
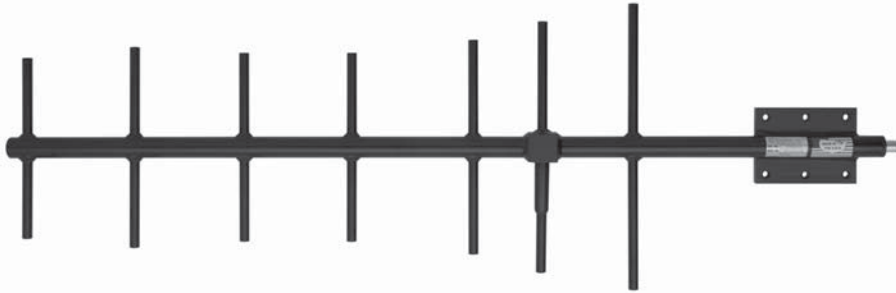


ANT500Y10-WR YAGI ANTENNA 10dBd



The Telewave ANT500Y10-WR is a high performance directional antenna, designed especially for point to point as well as point to multipoint applications. This antenna produces 10 dBd forward gain with an excellent front-to-back ratio. Solid aluminum elements with 360° welds prevent intermodulation and provide exceptional strength.

Each antenna is completely protected with our high-tech Txylan™ coating, which provides icing resistance and environmental protection from corrosive gases, ultraviolet radiation, salt spray, acid rain and wind blown abrasives

such as desert sand. The feed line is protected within the boom, and the radiating element is completely sealed against ice and other hazards with a tough, RF-transparent radome.

The ANT500Y10-WR includes a welded vertical plate and mast clamp set. A horizontal plate is optional. The clamp set secures the antenna to a vertical mast or tower support from 1.5" - 3.5" O.D. For installations on angled supports, the "U" mount allows mounting to virtually all angled supports up to 3.5" O.D.

SPECIFICATIONS			
Frequency (continuous)	485-512 MHz	Elements	7
Gain (typ)	10 dBd	Dimensions (L x H)	45 x 15 in.
Power rating (typ)	500 watts	Antenna weight	8 lb.
Impedance / VSWR	50 ohms / 1.5:1 (max)	Shipping weight	11 lb.
Front to back ratio (min)	20 dB	Wind rating / with 0.5" ice	150 / 125 MPH
Beamwidth V / H	49° / 47°	Exposed area (flat plate equiv.)	0.42 ft. ²
Pattern / Polarization	Directional / Vertical	Lateral thrust at 100 MPH	17.0 lb.
Termination	N Female or 7-16 DIN (opt)	(40 psf - flat plate equiv.)	