

ANT160-225F2

FIBERGLASS COLLINEAR ANTENNA 2.5 dBd

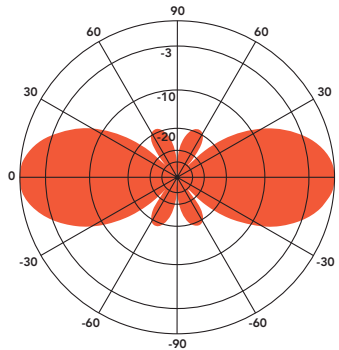
The American-made Telewave ANT160-225F2 is an extremely rugged collinear antenna for all US and Canadian railroad voice and PTC channels, with moderate gain and wide vertical beamwidth.

The high-tech "Cool Blue" radome provides maximum protection from corrosive gases, ultraviolet radiation, icing, salt spray, acid rain, and wind blown abrasives.

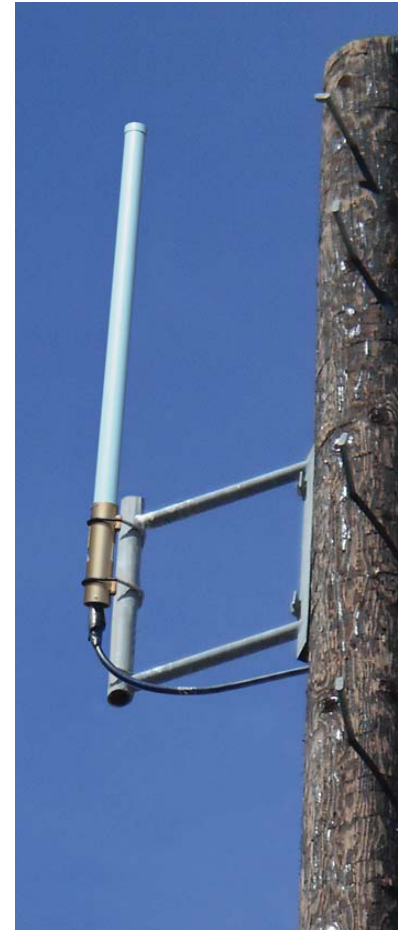
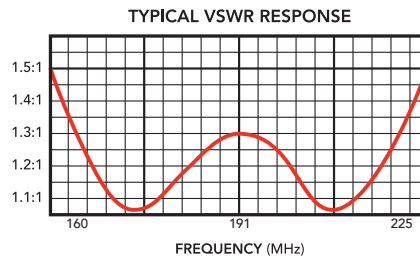
The antenna is constructed with brass and copper elements, with a path to ground potential for lightning impulse protection. All junctions are fully soldered for longterm reliability.

This compact antenna is an excellent choice in urban or rural areas, on wayside poles or remote facilities. The antenna produces 2.5 dBd gain, and is designed for reliable operation in all environmental conditions. (intrusion and water protection is equivalent to an IP24 rating.)

The ANT160-225F2 includes a ANTC485 dual clamp set for mounting to a 1.5" to 3" O.D. support pipe, and a 24" removable RG-213 N-Male jumper.



ANT160-225F2
Vertical Plane
Gain = 2.52 dBd



SPECIFICATION			
Frequency (continuous)	159.570-225.0 MHz	Dimensions (L x base diam.)in.	52 x 2.75
Gain	2.5 dBd	Tower weight (antenna + clamps)	11 lb.
Power Rating (Type.)	500 watts	Shipping weight	15 lb.
Impedance	50 ohms	Wind rating/ with 0.5" ice	225 / 175 MPH
VSWR	1.5:1 or less	Maximum exposed area	0.9 ft. ²
Pattern	Omnidirectional	Lateral thrust at 100 MPH	36 lb.
Vertical beamwidth	38°	Bending moment at top clamp	47 ft. lb.
Termination	Recessed N Female (7-16 DIN-F opt)	(100MPH, 40 PSF flat plate equiv.)	
Temperature	-40 to 140 Degrees F -40 to +60 Degrees C		