

## TPCP-3544, -3546, -3548 UHF BANDPASS PRESELECTOR

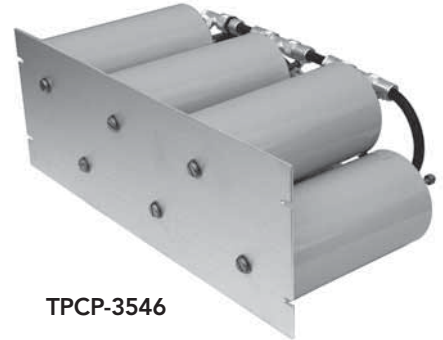
Telewave TPCP-3544, 3546, and 3548 UHF Bandpass Preselectors are specially designed for use with master receive systems, to ensure rejection of external noise sources. These bandpass preselectors provide optimum receiver desense protection when installed between the receiver multicoupler and the antenna. Their high power capability also allows these units to be used as sideband filters on the outputs of transmitters or transmitter combiners.

Bandpass preselectors reject all signals outside a selected pass window, and are often preferred at congested sites.

These bandpass filters consist of 4, 6, or 8 series-connected cavities, and are available in a wide range of pass bandwidths. Each model features "sharp-skirt" selectivity with minimum insertion loss. For optimum performance, these bandpass filters are custom tailored to meet individual requirements. Multiple-window configurations can be provided when more than one pass band is required.

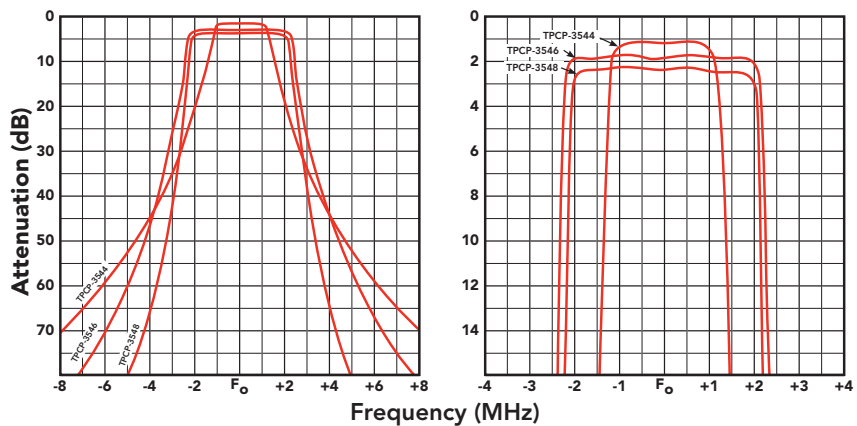
Heavy duty materials are used throughout the bandpass filters to insure top performance and long life, and RG-214 Mil-Spec cable is used for interconnections. Temperature stability is maintained from -30 to +70°C by the use of temperature compensators, and threaded invar rod. Tuners are silver plated and sliding contacts are made with beryllium copper fingerstock. All models are 19" rack-mountable, and come with N Female connectors.

All units are factory tuned to customer-supplied frequencies and no further adjustment should be necessary. Field re-tuning or adjustment of insertion loss can be accomplished quickly if needed.



TPCP-3546

TYPICAL FILTER RESPONSE CURVES



SPECIFICATIONS	TPCP-3544	TPCP-3546	TPCP-3548	
Frequency range		300-400 MHz		
Bandpass (typ)	2 MHz	4 MHz	4 MHz	
Attenuation (+/- 5 MHz)	50 dB	55 dB	80 dB	
Insertion loss (typ)	1.5 dB	2.0 dB	3.0 dB	
Power input (max)	350 watts			
Impedance / VSWR (max)	50 ohms / 1.5:1			
Temperature range	-30°C to +70°C			
Number of cavities	4 / 4"	6 / 4"	8 / 4"	
Connectors	N Female, UHF (opt.)			
Dimensions (HWD)	in. cm	5.25x19x15 13 x 48 x 38	7 x 19x15 18 x 48 x 38	8.75x19x15 22 x 48 x 38
Mounting	19" rack mount			
Finish	Alodine / Gray acrylic enamel			
Net weight	lb. (kg)	12 (5.5)	19 (8.6)	24 (10.9)
Shipping weight	lb. (kg)	16 (7.3)	28 (12.7)	33 (15)