

TPCP-4544, -4546, -4548 UHF BANDPASS PRESELECTOR

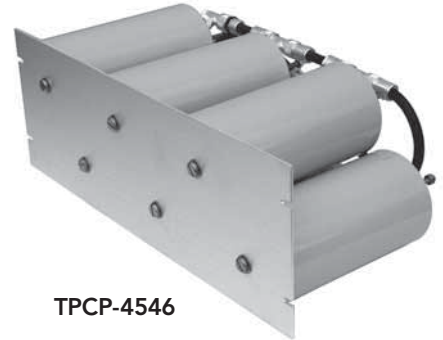
Telewave TPCP-4544, 4546, and 4548 UHF Bandpass Preselectors are specially designed for use with master receive systems, to ensure rejection of external noise sources. These bandpass preselectors provide optimum receiver desense protection when installed between the receiver multicoupler and the antenna. Their high power capability also allows these units to be used as sideband filters on the outputs of transmitters or transmitter combiners.

Bandpass preselectors reject all signals outside a selected pass window, and are often preferred at congested sites.

These bandpass filters consist of 4, 6, or 8 series-connected cavities, and are available in a wide range of pass bandwidths. Each model features "sharp-skirt" selectivity with minimum insertion loss. For optimum performance, these bandpass filters are custom tailored to meet individual requirements. Multiple-window configurations can be provided when more than one pass band is required.

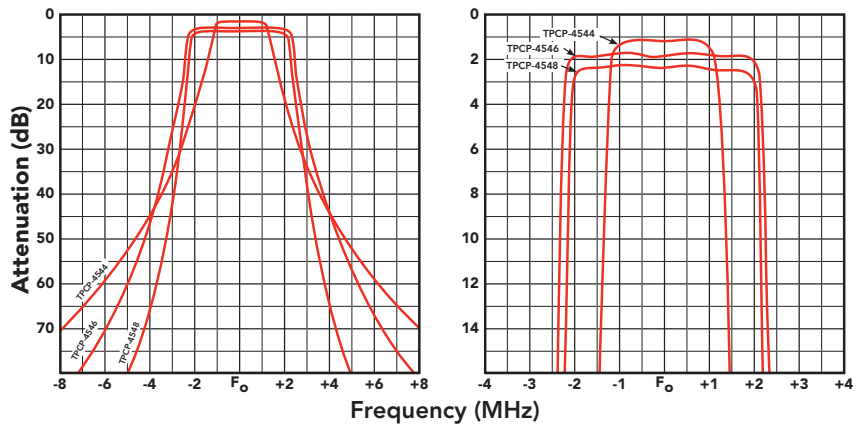
Heavy duty materials are used throughout the bandpass filters to insure top performance and long life, and RG-214 Mil-Spec cable is used for interconnections. Temperature stability is maintained from -30 to +70°C by the use of temperature compensators, and threaded invar rod. Tuners are silver plated and sliding contacts are made with beryllium copper fingerstock. All models are 19" rack-mountable, and come with N Female connectors.

All units are factory tuned to customer-supplied frequencies and no further adjustment should be necessary. Field re-tuning or adjustment of insertion loss can be accomplished quickly if needed.



TPCP-4546

TYPICAL FILTER RESPONSE CURVES



SPECIFICATIONS	TPCP-4544	TPCP-4546	TPCP-4548
Frequency range		400-512 MHz	
Bandpass (typ)	2 MHz	4 MHz	4 MHz
Attenuation (+/- 5 MHz)	50 dB	55 dB	80 dB
Insertion loss (typ)	1.5 dB	2.0 dB	3.0 dB
Power input (max)	350 watts		
Impedance / VSWR (max)	50 ohms / 1.5:1		
Temperature range	-30°C to +70°C		
Number of cavities / size	4 / 4"	6 / 4"	8 / 4"
Connectors	N Female, UHF (opt.)		
Dimensions (HWD)	in. cm	5.25x19x10.5 13 x 48 x 27	7 x 19x10.5 18 x 48 x 27
			8.75x19x10.5 22 x 48 x 27
Mounting	19" rack mount		
Finish	Alodine / Gray acrylic enamel		
Net weight	lb. (kg)	10 (4.5)	16 (7.3)
			20 (9.1)
Shipping weight	lb. (kg)	14 (6.4)	24 (11)
			28 (12.7)