

TPCP-2244, -2246 BANDPASS PRESELECTORS

Telewave TPCP-2244 and TPCP-2246 preselectors are specially designed for use with master receive systems to insure rejection of external noise sources. These bandpass preselectors provide optimum receiver desense protection when installed between a receiver multicoupler and the antenna. In addition, their high power capability allows these units to be used as sideband filters on the outputs of transmitters or transmitter combiners.

Bandpass preselectors reject all signals outside a selected pass window, and are often preferred at congested sites.

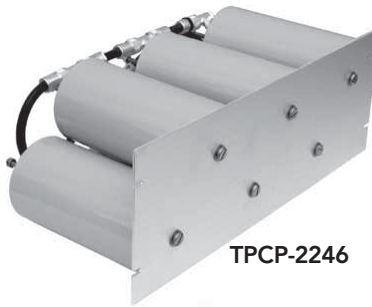
These bandpass filters consist of 4 or 6 series-connected cavities, and are available in a wide range of pass bandwidths. Each model features "sharp-skirt" selectivity with minimum insertion loss. For optimum performance, these bandpass filters are custom tailored to meet individual requirements. Multiple-window configurations can be provided when more than one pass band is required.

Heavy duty materials are used throughout these bandpass filters to insure top performance and long life, and RG214 Mil-Spec cable is used for interconnections. Temperature stability is maintained from -30 to +70°C by the use of temperature compensators, and threaded invar rod. Tuners are silver plated and sliding contacts are made with beryllium copper fingerstock. All models are 19" rack-mountable, and come with N Female connectors.

All units are factory tuned to customer-supplied frequencies and no further adjustment should be necessary. Field retuning or adjustment of insertion loss can be accomplished quickly if needed.

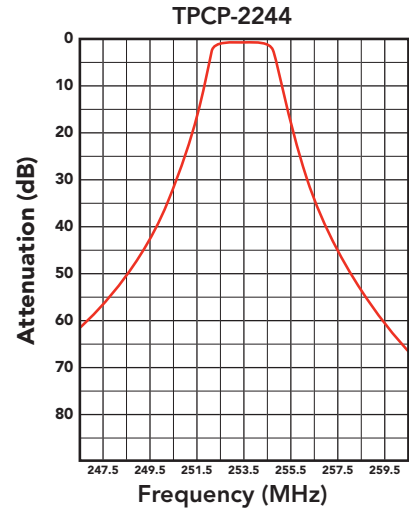


TPCP-2244



TPCP-2246

TYPICAL FILTER RESPONSE



SPECIFICATIONS	TPCP-2244	TPCP-2246
Frequency range	200-300 MHz	
Bandpass (typ)	2 MHz or less	4 MHz or less
Attenuation at +/- 5 MHz	50 dB	80 dB
Insertion loss (typ)	1.5 dB	2.0 dB
Power input (max)	350 watts	
Impedance (nom) / VSWR (max)	50 ohms / 1.5:1	
Temperature range	-30°C to +70°C	
Number of cavities / size	4 / 4"	6 / 4"
Connectors	N Female, UHF (opt.)	
Dimensions (HWD) in. / cm	5.25 x 19 x 12 / 13.3 x 48.3 x 30.5	10.5 x 19 x 12 / 26.7 x 48.3 x 30.5
Mounting	19" rack mount	
Finish	Alodine / Gray acrylic enamel	
Net weight lb. (kg)	20 (9.1)	29 (13.2)
Shipping weight lb. (kg)	23 (10.4)	32 (14.5)