

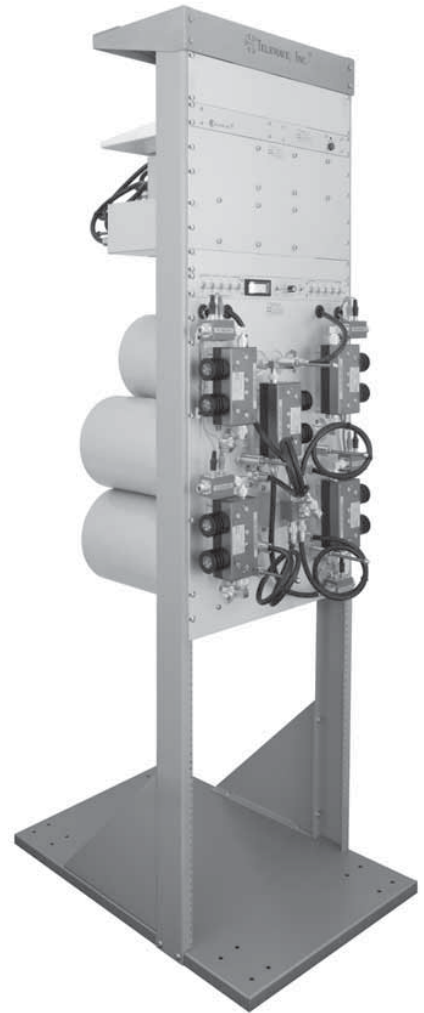
## M108-450-TRM SERIES LOW LOSS UHF COMBINER

The M108-450-TRM series uses up to ten 8", high "Q" low-loss cavities mounted on a standard 19" x 72" rack. Optional power monitoring for each channel is available, as well as remote keying for each transmitter. The PM10C2S-1C wattmeter panel uses only 1.75" of rack space.

An optional receiver system can be built around a Telewave.io UHF preselector. Depending on the application, the TPCP-4544 or TPCP-4546 preselector may be mounted in the upper portion of a 72" or 84" rack, and a 1RU receiver panel with 8 or 16 channels.

With new narrowband channel assignments, proper filtering is even more critical. The M108-450-TRM series allows operators of high-density UHF systems to take advantage of new technology and enhance the performance of existing systems.

**M108-450-5TRM  
with preselector, power  
monitoring, and RX panel**



SPECIFICATIONS	
Frequency range	400-512 MHz
Channels	1-10 channels into 1 or 2 antennas
Channel separation (min)	250 KHz
Input power (max)	100 Watts/CH @ 60 % duty cycle 80 Watts/CH @ 80 % duty cycle or 60 Watts/CH @ 100% duty cycle
Impedance / Input VSWR (typ.)	50 ohms / 1.25:1
Insertion loss per ch. (typ.)	3.5 dB - 5 ch. at 250 KHz spacing
TX-to-TX isolation (typ.)	80 dB
Antenna to TX isolation (typ.)	75 dB
2nd harmonic suppression (typ.)	90 dB
Cavity size	8" diameter / 1/4 wave
Operating temperature	-30°C to +60°C
Mounting / Connectors	19" rack mount / N Female
Panel dimensions (HWD) in. (cm)	24.5 x 19 x 14 (62 x 48.3 x 35.6)
Weight lb. (kg)	150 (68.1) 5 ch.