

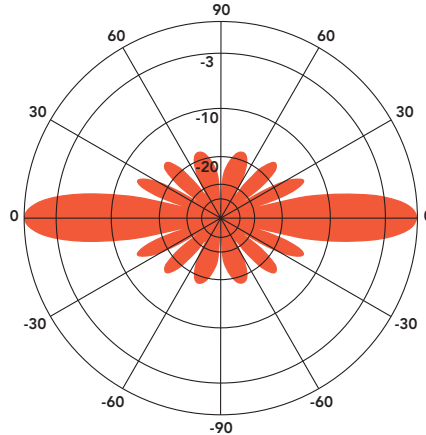
ANT450F6

FIBERGLASS COLLINEAR ANTENNA 6 dBd

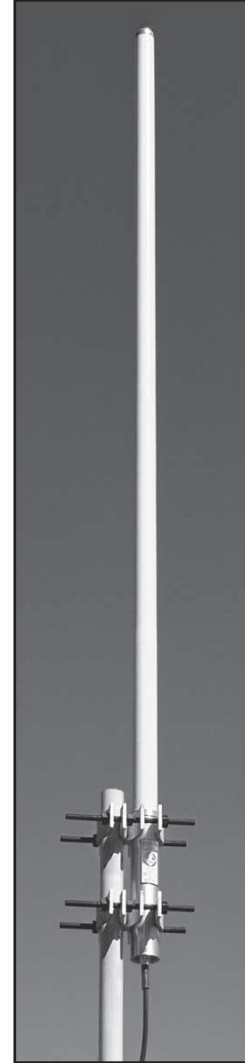
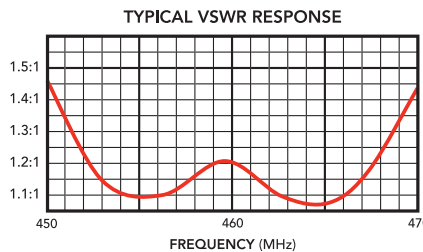
The Telewave ANT450F6 is an extremely rugged, medium-gain, fiberglass collinear antenna, designed for operation in all environmental conditions. The antenna is constructed with brass and copper elements, connected at DC ground potential for lightning impulse protection.

All junctions are fully soldered to prevent RF intermodulation, and each antenna is completely protected within a rugged, high-tech radome to ensure survivability in the worst environments. The "Cool Blue" radome provides maximum protection from corrosive gases, ultraviolet radiation, icing, salt spray, acid rain, and wind blown abrasives.

The ANT450F6 includes an ANTC482 dual clamp set for mounting to a 1.5" to 3.5" O.D. support pipe. Stand-off and top mounts are also available.



ANT450F6 - 460 MHz
Vertical Plane
Gain = 6.32 dBd



SPECIFICATIONS			
Frequency (continuous)	445-480 MHz	Dimensions (L x base diam.) in.	94 x 2.375
Gain	6 dBd	Tower weight (antenna + clamps)	21 lb.
Power rating (typ.)	500 watts	Shipping weight	26 lb.
Impedance	50 ohms	Wind rating / with 0.5" ice	150 / 125 MPH
VSWR	1.5:1 or less	Maximum exposed area	1.5 ft. ²
Pattern	Omnidirectional	Lateral thrust at 100 MPH	60 lb.
Vertical beamwidth	18°	Bending moment at top clamp	143 ft. lb.
Termination	Recessed N Female 7-16 DIN-F opt.	(100 MPH, 40 PSF flat plate equiv.)	