

ANT220F0-P

FIBERGLASS RADOME ANTENNA (PIM)

The Telewave.io fiberglass radome antennas are rugged omnidirectional antennas suited for most environments. The radome provides protection from corrosive gases, ultraviolet radiation, icing, acid rain, and wind-blown abrasives. The design and construction reduce internally produced intermodulation products. Intrusion and moisture protection is equivalent to an IP24 rating. The default radome color is Cool Blue™.

When ordering, specify all system TX and RX frequencies.

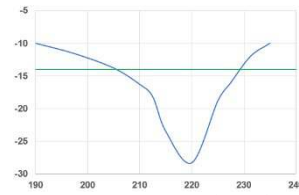
The antenna kit includes a dual clamp set for mounting the antenna to a 1.5" to 3.5" O.D. support mast (Not Included.) Please contact your tower vendor or local structural engineering firm for assistance with mounting hardware requirements and configuration.

Variations

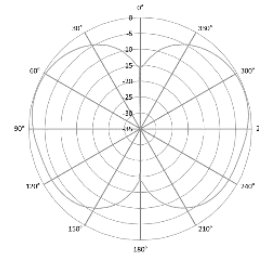
Part Number	Connector	Jumper	Default Clamp	Mounting
ANT220F0DIN	7/16 DIN-F	None	ANTC485	Clamps Bottom (Normal)
ANT220F0DIN-I	7/16 DIN-F	None	ANTC485	Clamps Top (Inverted)

Gain by Frequency

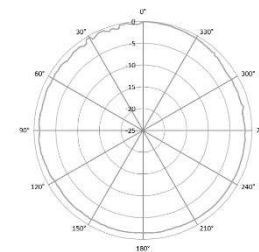
Frequency	Peak Gain	Peak Gain
215 MHz	1.5 dBd	3.6 dBi
220 MHz	0.6 dBd	2.7 dBi
225 MHz	-0.3 dBd	1.8 dBi



Rtn Loss > 14 dB (1.5:1)



Average Vertical Pattern



Average Horizontal Pattern



SPECIFICATIONS

Frequency Range (Continuous)	215 to 225 MHz	Wind rating / with 0.5" ice (MPH)	225 / 175
Gain	See Freq Chart	Maximum exposed area (sq.ft)	0.91
Power Rating (RMS Continuous)	500 watts / 57 dBm	Lateral Thrust experienced by the antenna 225 MPH (lb)	87.6
Passive Intermodulation (PIM) Rating	-150 dBc	Bending Moment transfer to top clamp 225 MPH (lb-ft)	144
Peak Instantaneous Power (PIP) Rating	NA	Ferrule Dimension Inches (H" x D")	11.5 x 2.75 (29.2 x 7)
Beam width Vertical / Horizontal	80° / 360°	Radome Dimensions Inches (H" x D")	39.5 x 2.5 (100.3 x 6.4)
Supported Polarization	Vertical	Total Length Inches (H")	51 (129.5)
Vertical Beam Tilt (from horizon)	0°	Installed Weight Lbs (Antenna + Default Clamp)	34 + 7 (15.4 + 3 Kg)
RF Impedance	50 Ohms	Antenna Shipping Mode (Freight/UPS/FedEx/etc.)	All Modes
DC Impedance	Open	Shipping Tube Weight - Antenna + ANTC485 clamp (lbs)	44 (20 Kg)
Input VSWR / Return Loss (Minimum)	1.5:1 / 14 dB	Shipping Box Dimensions (L" x W") (Round Tube)	60 x 6 (152.5 x 15.25)
Coastal / Salt Air Suitable	Yes	Default Clamp Shipping Weight - Separate Box (lbs)	8 (3.75 Kg)
Temperature Range (Operating or Storage)	-58 to +140 °F -50 to +60 °C	Default Clamp Shipping Box Dimensions (L" x W" x H")	8 x 6 x 1 (20.5 x 15.25 x 2.5)
PIM ≥	135		

ANTC485

Clamp Kit for Radome Antennas: F0 & F2

WARNING

For your safety: do not install any antenna near power lines, carefully follow all installation instructions, and use safety devices when climbing. Ensure that the tower structure is properly and safely grounded.

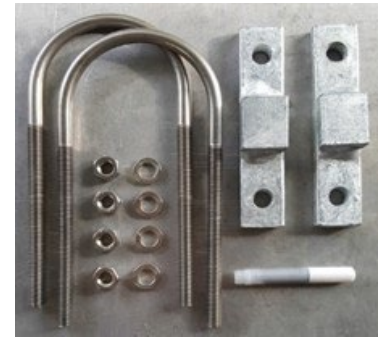
If the antenna falls toward or contacts any overhead wires, IMMEDIATELY LET GO and stay away. Contact the utility company for assistance.

Consult a qualified structural engineer to verify that the tower and all mounting hardware are sufficient to support the antenna and RF cables.

Antenna mounting clamps must be properly installed and spaced to prevent antenna rotation from wind loading. Every installation is unique.

MOUNTING INSTRUCTIONS

1. Apply anti-seize compound to the threaded rod ends. Insert rods through dual clamps with hex nuts and lock washers in the middle of the clamps. Mount both clamps to the support structure with the two single clamp plates, hex nuts, and lock washers. Arrange clamps so that 1"-2" of the ferrule is exposed above and below the clamps. Be sure to allow sufficient thread length on the antenna side of the clamps.
2. Attach the antenna clamp plate to the upper clamp set only, allowing maximum plate movement on the rods. Feed the ferrule down through the clamp until aligned with the upper attachment point. Partially tighten the hex nuts and straighten the antenna until the antenna is vertical.
3. Attach and secure the lower antenna clamp with the supplied hex nuts and lock washers and tighten both clamps until the lock washers are flat. Then perform an additional half turn on each nut.
4. Connect RF feed cable terminated with Type-N or 7-16 DIN as required to antenna input connector. Secure all cables with UV-Resistant cable ties.
5. Seal the input connector with waterproof tape or other sealing material. Connector sealing instructions can be found at www.telewave.com.



ANTC485 Clamp Kit

- (2) Clamp Plates
- (2) 3/8"-16 Stainless U-Bolts
- (4) Hex Nuts
- (4) Lock Washers
- (1) Tube of Anti-Seize Compound



ANTC485 Typical Installation