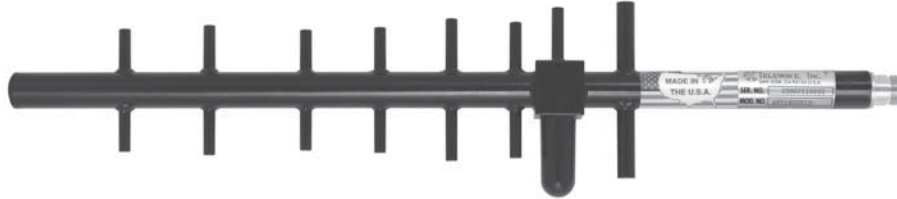
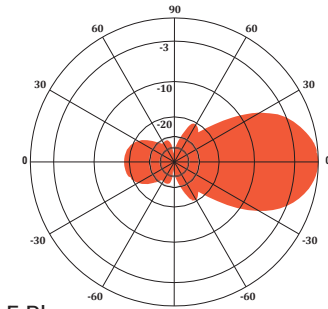
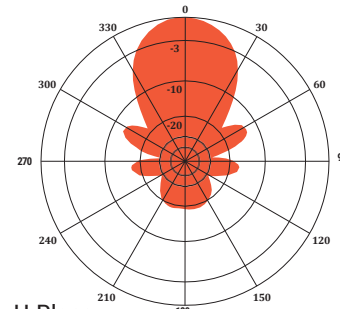


**ANT1800Y10-WR**
**YAGI ANTENNA 10.2 dBd / 12.3 dBi**


ANT1800Y10-WR at 1795 MHz

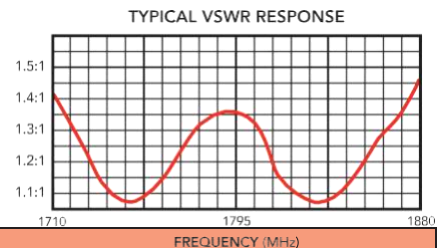

**E-Plane**  
 Gain: 10.2 dBd

**H-Plane**  
 Gain: 10.2 dBd

The Telewave.io ANT1800Y10-WR is a rugged, wideband, high gain Yagi antenna for the DCS-1800 band, designed for handheld use with many types of portable wireless analyzers. This antenna can also be installed for fixed use in any environment. The antenna uses eight solid brass elements, and produces 10 dBd forward gain with excellent front-to-back performance. Construction and design are optimized to prevent RF intermodulation, and ensure precise pattern control.

Each antenna is completely protected with Telewave.io's high-

tech Txytan™ coating, which seals the antenna against corrosive gases, UV radiation, salt spray, acid rain and wind-blown sand. The feed line is sealed within the antenna boom, and an RF-transparent radome protects the driven element from corrosion or icing.

The ANT1800Y10-WR includes a small U-clamp and plates that allow the antenna to be mounted for vertical or horizontal polarization. The clamp set can be attached to any vertical mast or tower support between 0.5"-1.125" O.D. The Universal mount option allows mounting to angled supports up to 3.5" O.D., and continuous tilt adjustment.



SPECIFICATIONS			
Frequency (continuous)	1710-1880 MHz	Elements	8
Gain (typ)	10.2 dBd	Dimensions (L x H)	19 x 3 in.
Power rating (typ)	500 watts	Antenna weight	3 lb.
Impedance / VSWR	50 ohms / 1.5:1 (max)	Shipping weight	5 lb.
Front to back ratio (min)	20 dB	Wind rating / with 0.5" ice	165 / 150 MPH
Beamwidth V / H	40° / 50°	Exposed area (flat plate equiv.)	0.14 ft. <sup>2</sup>
Pattern / Polarization	Directional / Variable	Lateral thrust at 100 MPH	5.6 lb.
Termination	N Female or 7-16 DIN (opt)	(40 psf - flat plate equiv.)	