

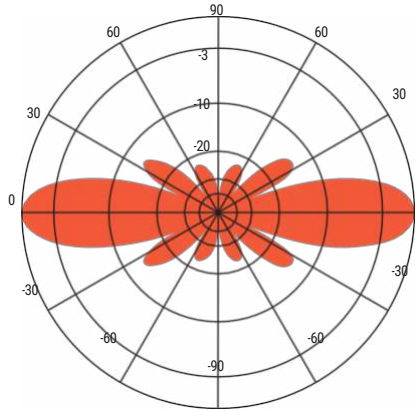
# ANT500F6

## FIBERGLASS COLLINEAR ANTENNA 6 dBd

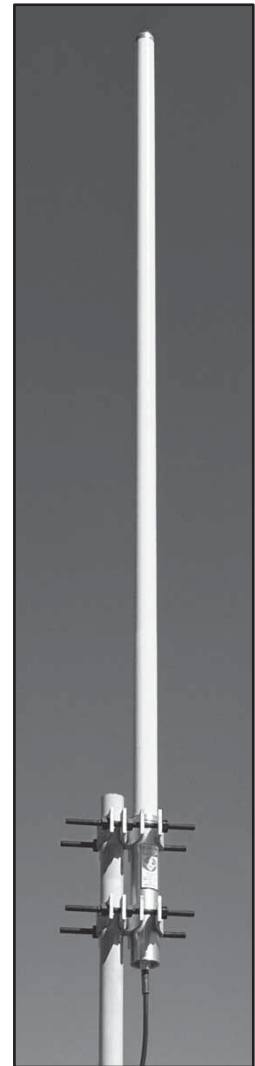
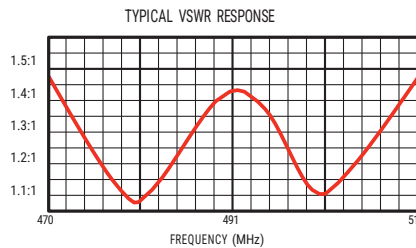
The Telewave.io ANT500F6 is an extremely rugged, medium- gain, fiberglass collinear antenna, designed for operation in all environmental conditions. The antenna is constructed with brass and copper elements, connected at DC ground potential for lightning impulse protection.

All junctions are fully soldered to prevent RF intermodulation, and each antenna is completely protected within a rugged, high- tech radome to ensure survivability in the worst environments. The "Cool Blue" radome provides maximum protection from corrosive gases, ultraviolet radiation, icing, salt spray, acid rain, and wind blown abrasives.

The ANT 50 0 F 6 includes an ANTC482 dual clamp set for mounting to a 1.5" to 3.5" O.D. support pipe. Stand-off and top mounts are also available.



ANT500F6 - 490 MHz  
Vertical Plane  
Gain = 6.28 dBd



SPECIFICATIONS			
Frequency (continuous)	470-512 MHz	Dimensions (L x base diam.) in.	89 x 2.375
Gain	6 dBd	Tower weight (antenna + clamps)	20 lb.
Power rating (typ.)	500 watts	Shipping weight	25 lb.
Impedance	50 ohms	Wind rating / with 0.5" ice	150 / 125 MPH
VSWR	1.5:1 or less	Maximum exposed area	1.4 ft. <sup>2</sup>
Pattern	Omnidirectional	Lateral thrust at 100 MPH	57 lb.
Vertical beamwidth	19°	Bending moment at top clamp	127 ft. lb.
Termination	Recessed N Female 7-16 DIN-F opt.	(100 MPH, 40 PSF flat plate equiv.)	