

## ANT830F6

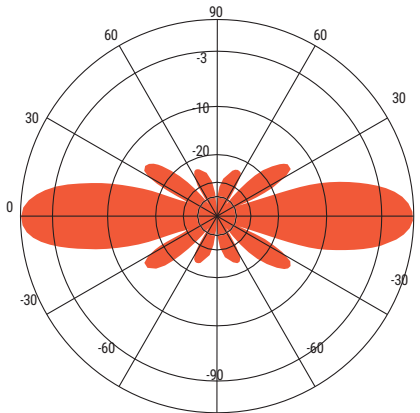
### FIBERGLASS COLLINEAR ANTENNA 6 dBd

The Telewave.io ANT830F6 is an extremely rugged, medium-gain, fiberglass collinear antenna, designed for operation in all environmental conditions. The antenna is constructed with brass and copper elements, connected at DC ground potential for lightning impulse protection.

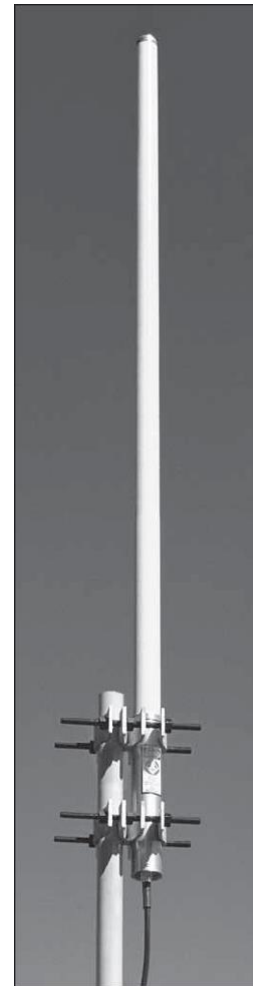
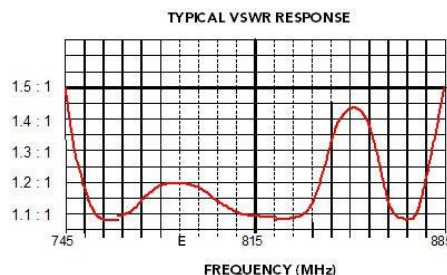
All junctions are fully soldered to prevent RF intermodulation, and each antenna is completely protected within a rugged, high-tech radome to ensure survivability in the worst environments. The "Cool Blue" radome provides maximum protection from corrosive gasses, ultraviolet radiation, icing, salt spray, acid rain, and wind blown abrasives.

The ANT830F6 includes an ANTC482 dual clamp set for mounting to a 1.5" to 3.5" O.D. support pipe. Stand-off and top mounts are also available.

Any sub model can be ordered as an inverted antenna.



ANT830F6-800 MHz  
Vertical Plane Gain =  
6.10 dBd



SPECIFICATIONS			
Frequency (continuous)	745-885 MHz	Dimensions (L x base diam.) in.	68 x 2.75
Gain	6 dBd	Tower weight (antenna + clamps)	20 lb.
Power rating (typ.)	500 watts	Shipping weight	24 lb.
Impedance	50 ohms	Wind rating / with 0.5" ice	200 / 150 MPH
VSWR	1.5:1 or less	Maximum exposed area	1.13 ft. <sup>2</sup>
Pattern	Omnidirectional	Lateral thrust at 100 MPH	45 lb.
Vertical beamwidth	19°	Bending moment at top clamp	56 ft. lb.
Termination	Recessed N Female 7-16 DIN-F opt.	(100 MPH, 40 PSF flat plate equiv.)	